



**ur Coast
ur Homes
ur Jobs**



Eastbridge May 2008

Minsmere Levels Stakeholders Group

Living with Water

The Minsmere Levels receive rain and flood water from miles around. Uniquely in Suffolk, its discharge into the sea depends on low tide levels through a gravity controlled sluice.

Water Management on the Levels is a complex task, made more difficult by the fragmented organisational responsibilities.

Much work has been carried out over the last year. Come and hear what those involved have done, how they are working together, and what work is planned for the future.

**Come and have your say at this
Public Meeting:
Friday 11th June 2010 at 7 pm**

Theberton Jubilee Hall

(next to Theberton Church)

Speakers:

Giles Bloomfield: Environment Agency, Technical Specialist.

David Thomas : Internal Drainage Board, Engineer.

Nat Bacon : Theberton Hall Farm, Landowner.

Adam Rowlands: RSPB, Senior Site Manager.

MLSG secretary : John Rea-Price Tel. 01728 635083 e.mail: john.reaprice@btinternet.com

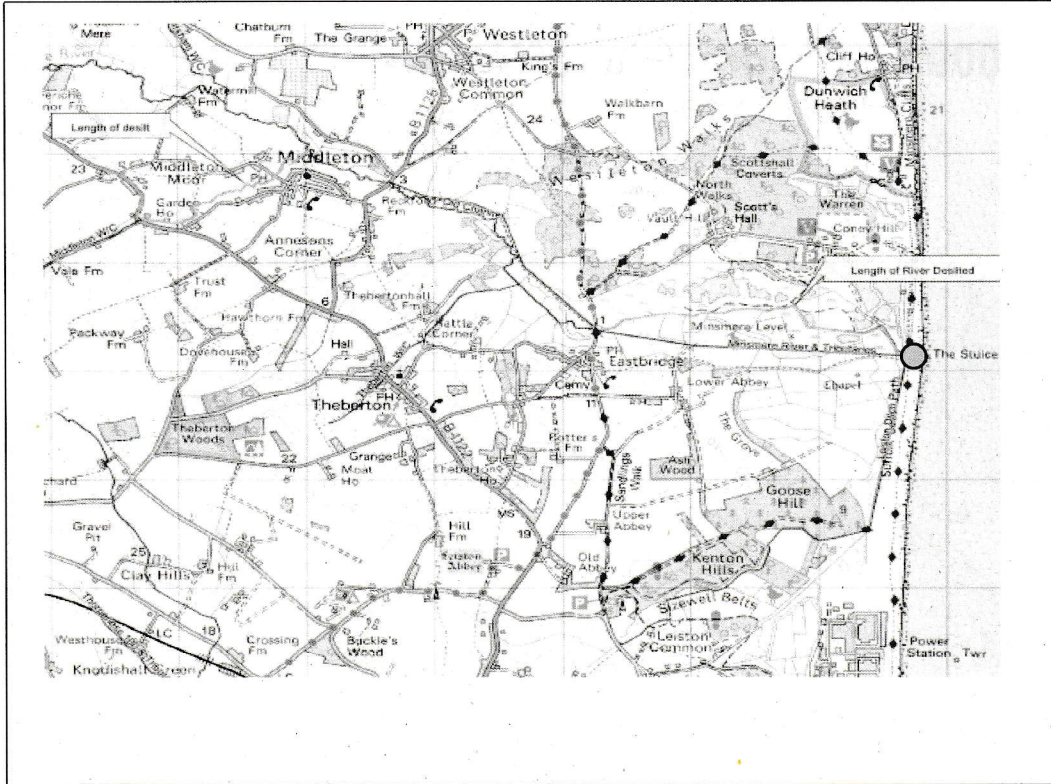
Minsmere Levels

2009/10 Works Programme & Forward Look

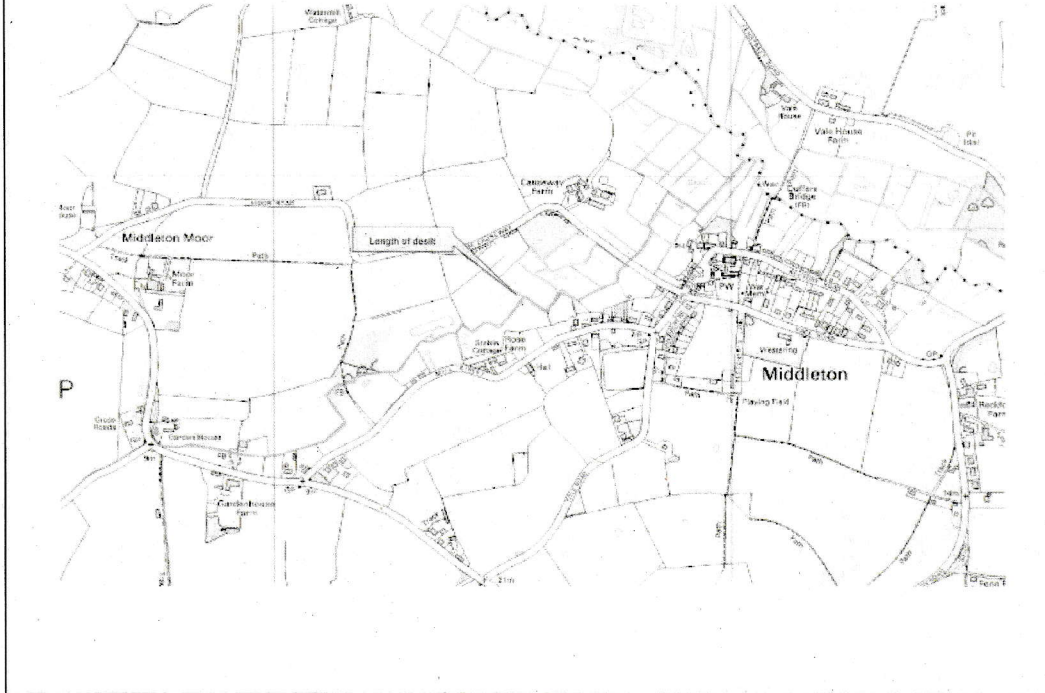
Name Giles Bloomfield

Job title Technical Support Team Leader - Operations Delivery

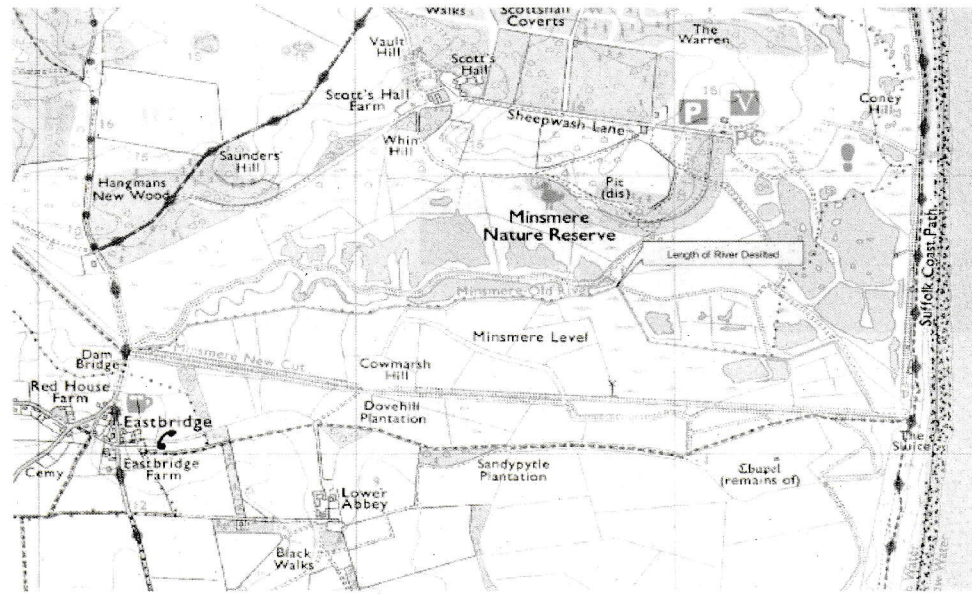
Date 11 June 2010



2009/10 Programme of Works

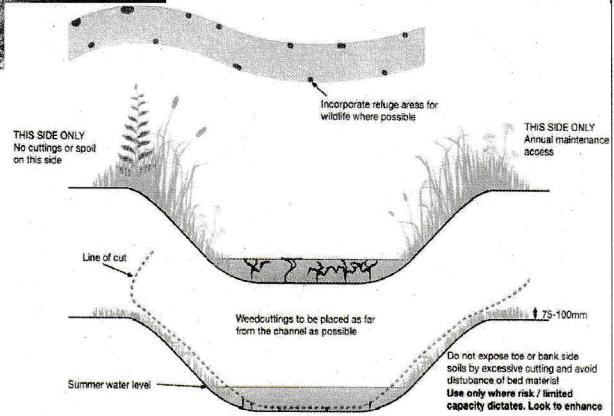


Minsmere Old River Desilt

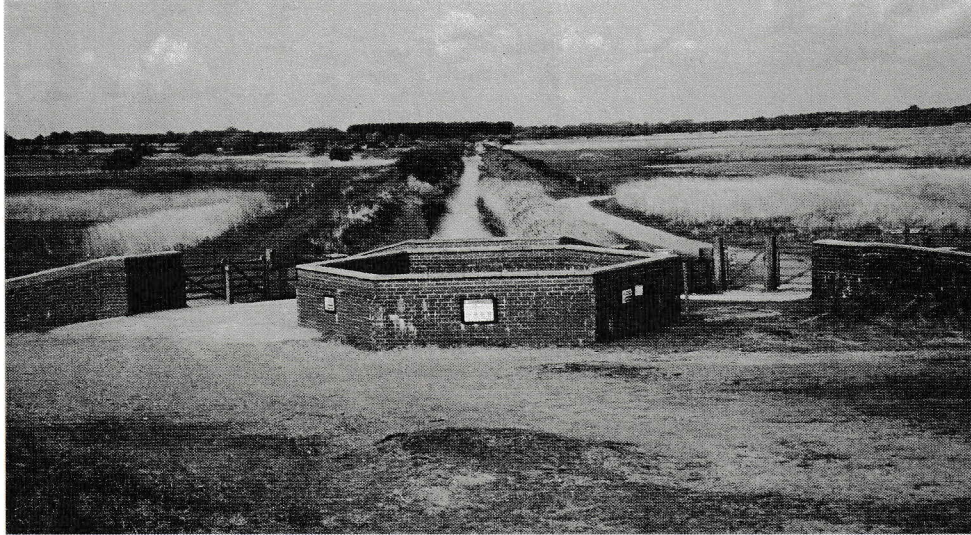


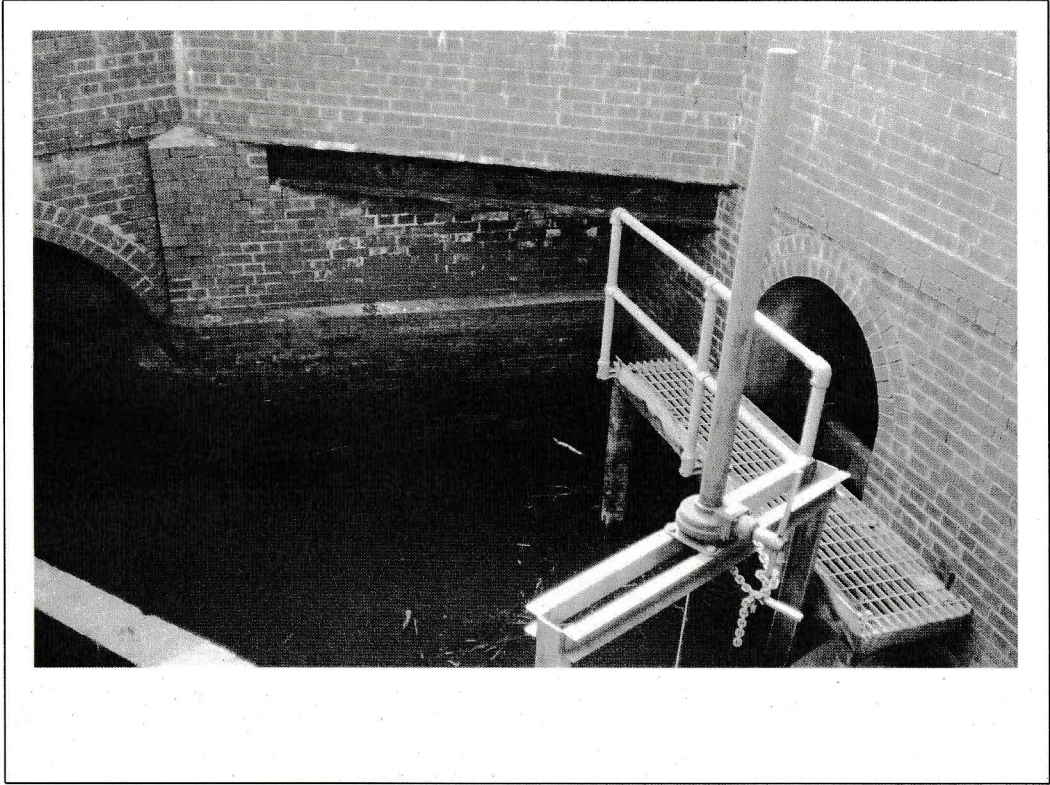


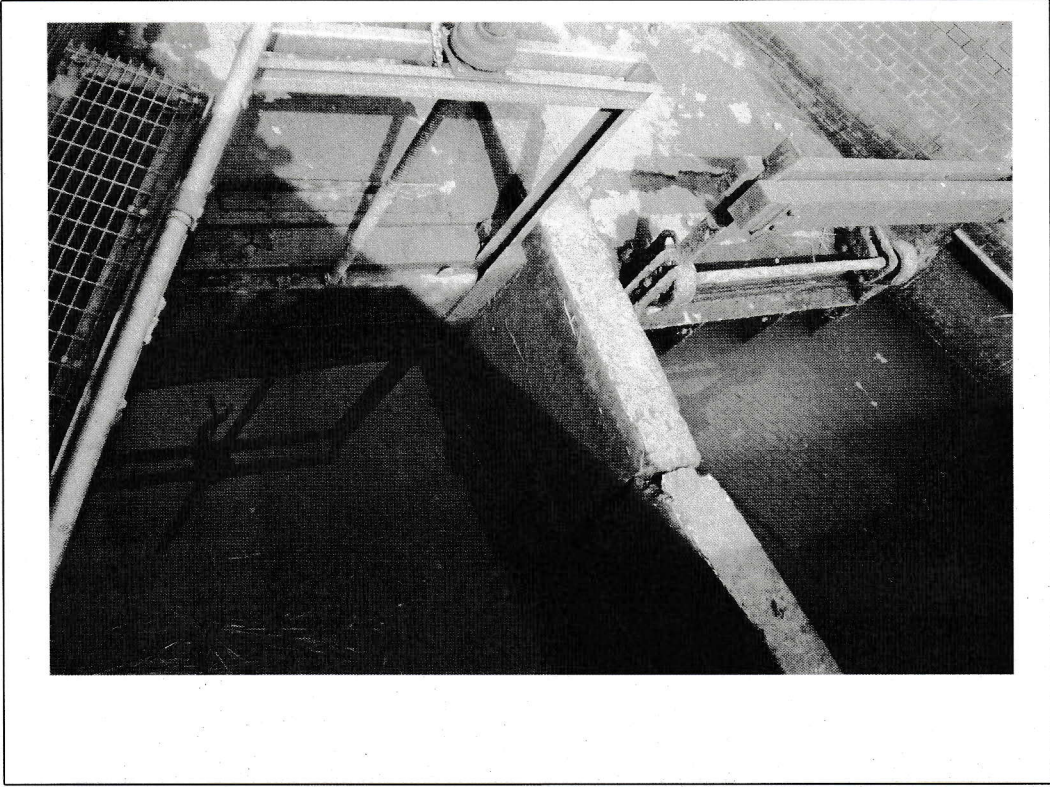
Environmental Options

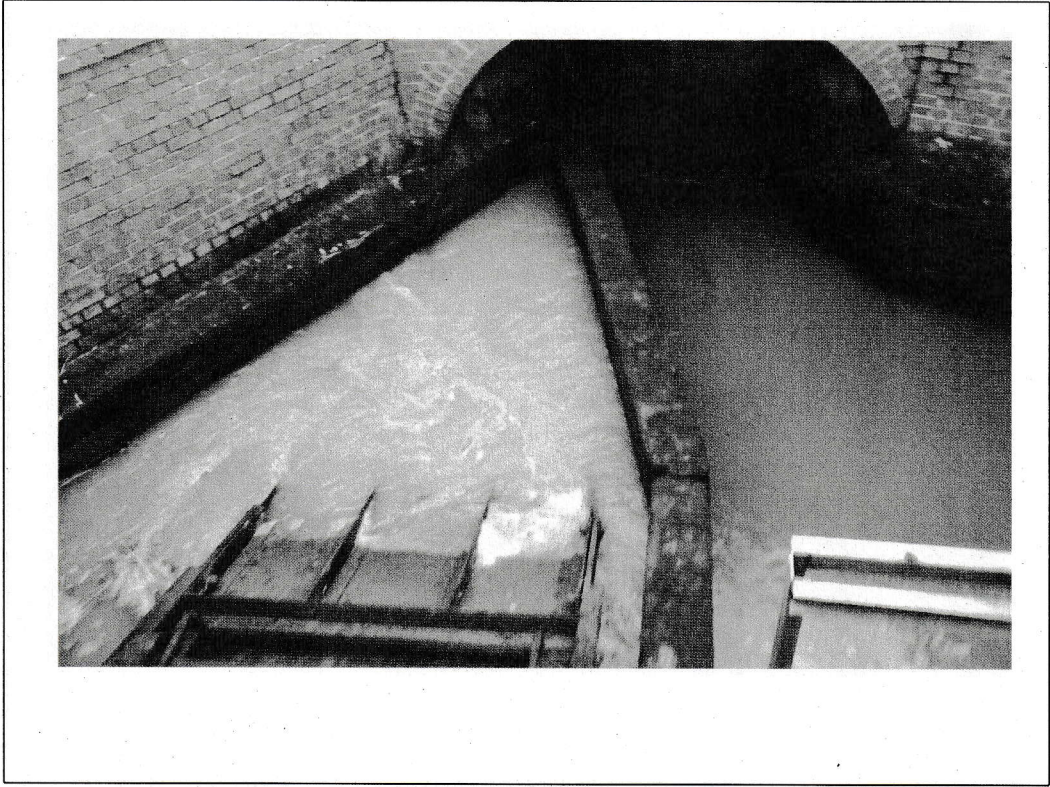


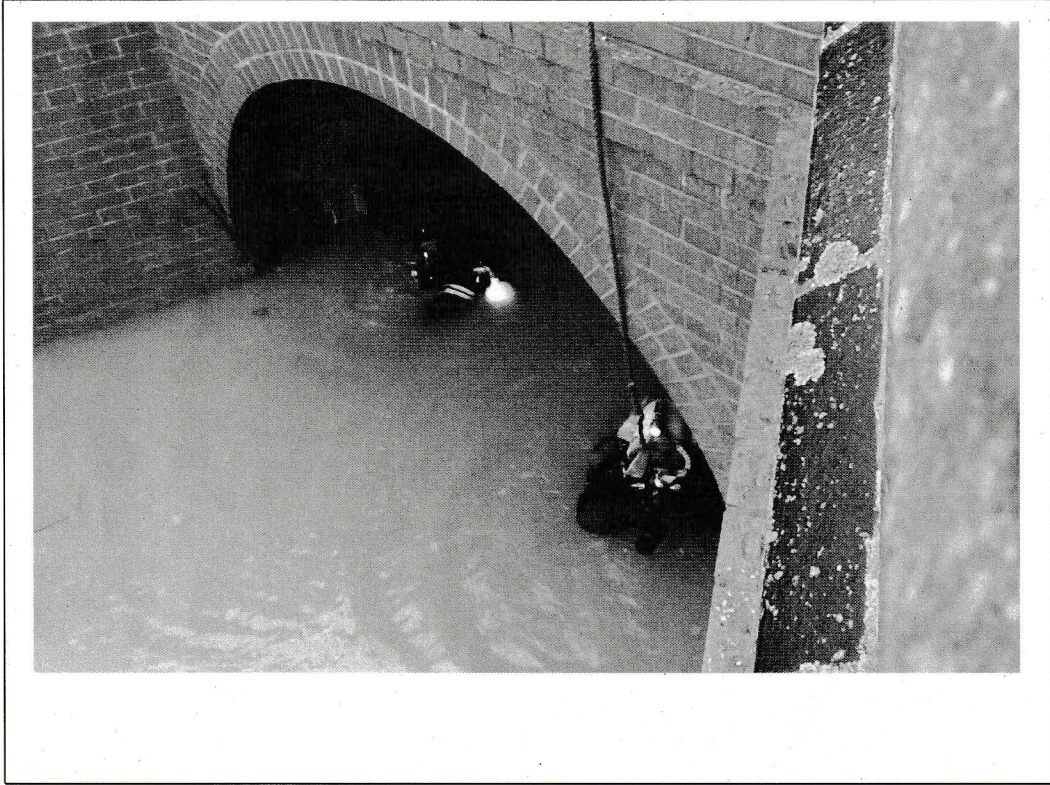
Minsmere Sluice Inlet Chamber





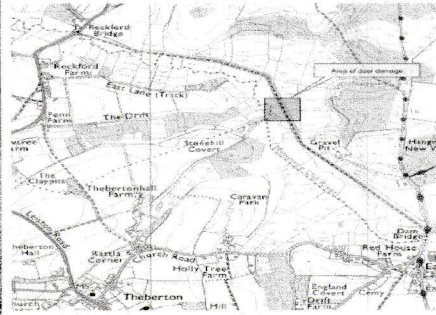


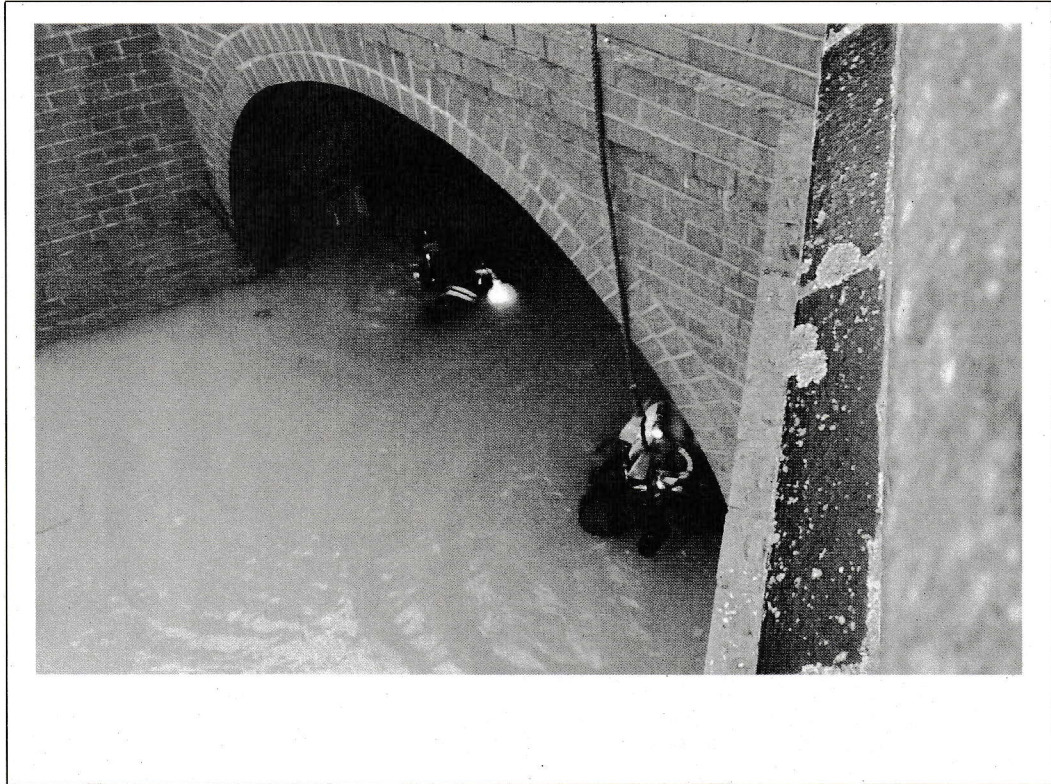


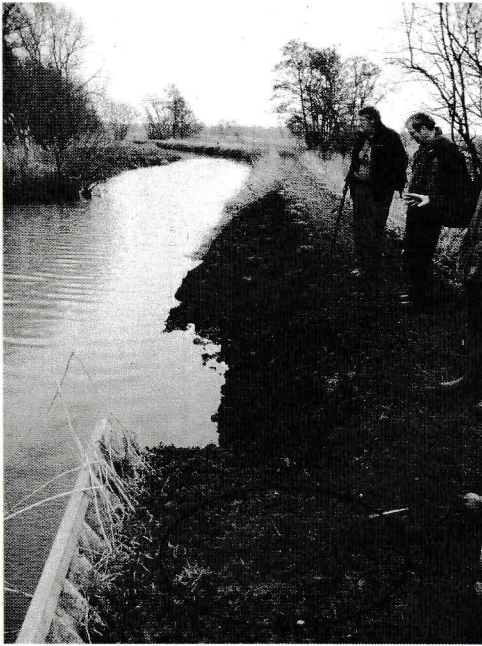




Piling Failure on New Cut







Risks & Opportunities



Health Risks asbestos , slips trips falls

Flood risk if embankment deteriorates further

Incident Response Temporary Measures in place

Opportunities designed deer crossing



Piling Failure on New Cut

